

★ CONNECT TO:
SUFFOLK COUNTY SEWER DISTRICT
No. 24 - (GABRESKI AIRPORT)

VILLAGE OF WESTHAMPTON
BEACH BOUNDARY

PROPOSED PHASE #3 FOR
VILLAGE SEWER SYSTEM

PROPOSED PHASE #2 FOR
VILLAGE SEWER SYSTEM

PROPOSED PHASE #1 FOR
VILLAGE SEWER SYSTEM

QUANTUCK
BAY

MONEYBOQUE
BAY

EAST MORICHES
BAY

ATLANTIC
OCEAN

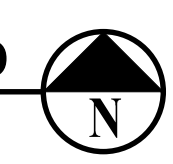
LEGEND:

- PHASE 1 SERVICE AREA
- PHASE 2 SERVICE AREA
- PHASE 3 SERVICE AREA
- SURFACE WATER
- SCTM PARCEL BOUNDARIES
- VILLAGE OF WESTHAMPTON BEACH BOUNDARY

NOTE: THE PHASE 4 SERVICE IS COMPRISED OF ALL TAX PARCELS LOCATED WITHIN THE VILLAGE BOUNDARY BUT NOT WITHIN THE PHASE 1, 2 OR 3 SERVICE AREAS. WASTEWATER GENERATED BY THE PHASE 4 SERVICE AREA PARCELS WILL BE TREATED VIA INNOVATIVE ADVANCED ONSITE NITROGEN REMOVAL SYSTEMS.

Village of Westhampton Beach Sewer System Overview Map

SCALE: 1" = 1000'-0"



H

2

M

architects + engineers

Westhampton, NY 11967 New City, NY 10956
 Albany, NY 12242 Poughkeepsie, NY 12544
 Westhampton, NY 11981 Haverhill, NJ 07724